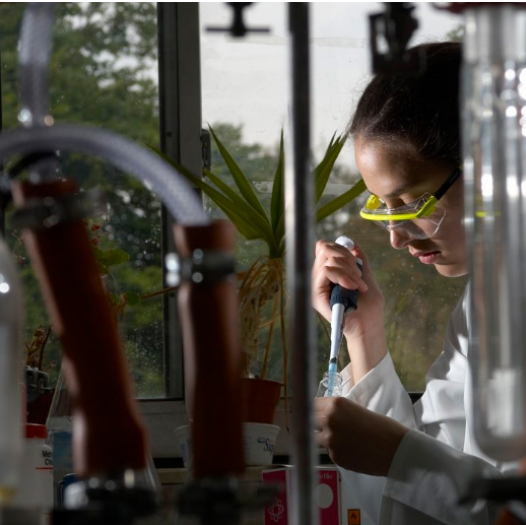




AUSTRALIA'S FOREST INDUSTRIES AT A GLANCE



INDUSTRY SNAPSHOT



Forest industries are the keystone employer in many regional towns



Forest industries provide direct employment for 80,000 people & indirect employment for 100,000 people



Forest industries plant more than 70 million plantation trees each year



Our forestry operations are carbon positive & our plantations store 258 million tonnes of carbon



AFPA members are 100% globally certified



Forest industries contribute \$24 billion a year to Australia's economy



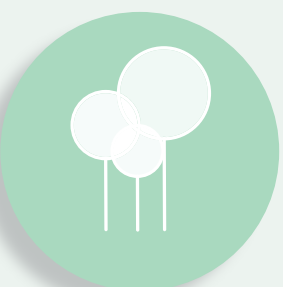
Renewable timber products help build more than 162,000 homes



Australia has a trade deficit in forest products of more than \$2 billion a year



There are almost 2 million hectares of forest plantations (hardwood and softwood) in Australia



There are 132 million hectares of native forest in Australia, of which less than 0.06% is harvested each year & always regenerated

MAKING THE PRODUCTS YOU LOVE...



NATIVE FOREST TIMBER MAKES...

Floorboards, staircases and furniture, while the residues and secondary timbers are used to make pallets, paper and packaging, replacing single use plastics. Timber production for appearance-grade hardwood timber products occurs in designated areas that almost always have been either previously harvested or bushfire affected. After harvest, these areas are regenerated, with no net loss of forest over time.



PLANTATION FOREST TIMBER MAKES...

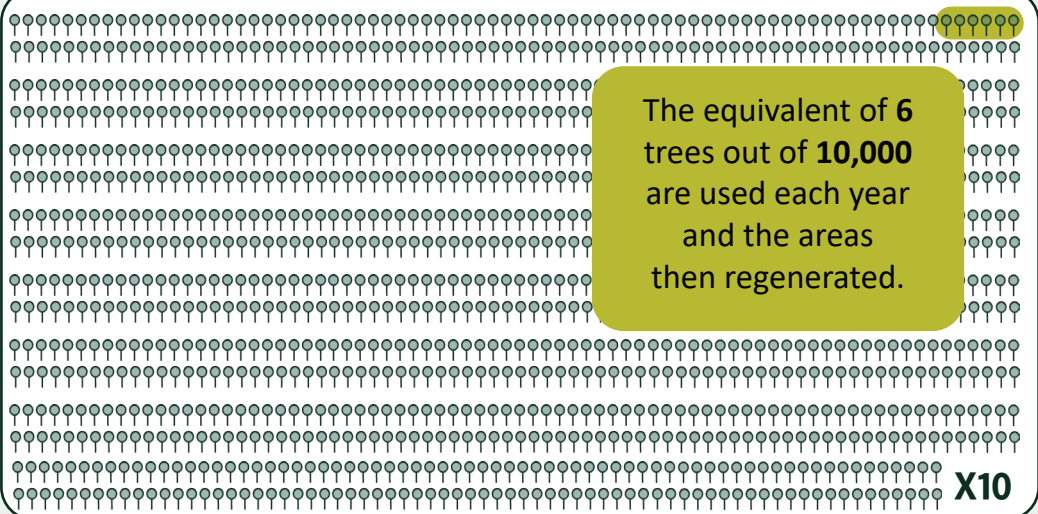
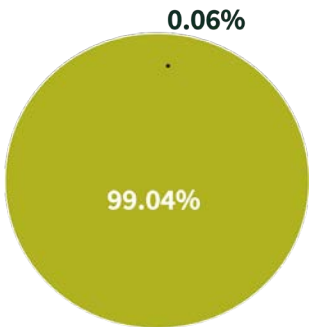
The timber frames for our homes, engineered wood products used to build new multi-storey residential and commercial buildings, wood-based panels for our kitchens, landscape products for our gardens, and wood fibre used to manufacture magazines, paper boxes and packaging, replacing single use plastics.



...FROM CERTIFIED, SUSTAINABLY MANAGED NATIVE FORESTS AND PLANTATIONS

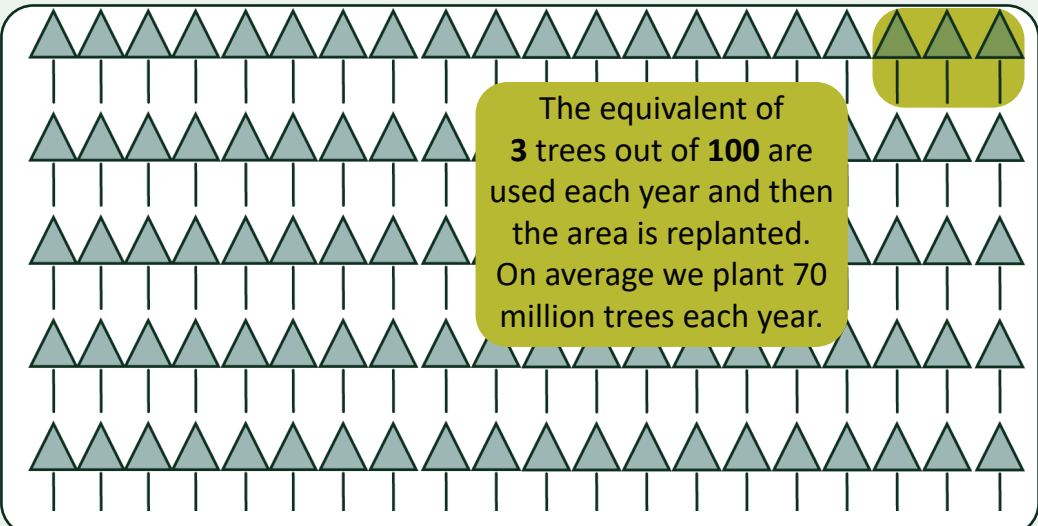
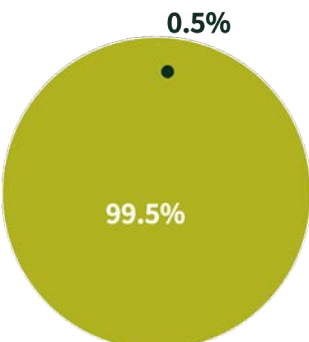
NATIVE FORESTRY

Australia has 132 million hectares of native forest. Just 78,000 hectares - or 0.06 per cent - is harvested for timber production annually, and then regenerated by law.



PLANTATION FORESTRY

There are 385 million hectares of agricultural land in Australia. Plantations occupy around 1.9 million hectares or about 0.5%.





AFPA is the peak national industry body representing the resources, processing, and pulp and paper industries covering the forest products value chain.

AFPA represents all elements of the value chain from the sustainable harvesting of plantations and multiple use natural forest resource including forest establishment and management, harvesting and haulage, processing of timber resources and manufacture of pulp and paper.



ausfpa.com.au



02 6285 3833



PO Box 239
Deakin West
ACT 2600 Australia